

Willowbrook Hospice Student Information Booklet



Willowbrook Hospice
Portico Lane
Prescot
Merseyside
L34 2QT
0151 430 8736

About Us

Welcome to Willowbrook Hospice!

Willowbrook Hospice was opened in 1997 and is a dedicated service providing free specialist palliative care to adults over eighteen years of age with life limiting illnesses.

We aim to treat each person and their chosen family/loved ones in a holistic way, looking after not only their physical symptoms but their spiritual, psychological, social and emotional needs too.

Our Values



We hope you enjoy your experience of palliative care whilst on placement and can develop and enhance your nursing knowledge here with us.

This booklet should give you a general overview of your placement here at Willowbrook but if you require any further information, please don't hesitate to contact us.

Why palliative care is so important

Palliative care is defined by the World Health Organisation as an approach that improves the quality of life of patients and their families who are facing

problems associated with life-limiting illness, usually progressive. It prevents and relieves suffering through the early identification, correct assessment and treatment of pain and other problems whether physical, psychosocial or spiritual.

Dame Cicely Saunders founded the hospice movement in 1967. She shared the importance of combining medical and nursing care with this “holistic” approach that recognised practical, emotional, social, and spiritual needs, thus treating dying people as more than just a patient with symptoms to control.

This has changed the way we care for the ill, dying and bereaved.



Death and dying are an inevitable and normal part of our lives.

We only have one chance to get it right!

Your Experience

Whilst on your placement you will be based at our 10 bedded Inpatient Unit but will also have the opportunity to work alongside the wider multidisciplinary teams attending ward rounds, multi-disciplinary meetings, spending time in Outreach and our Outpatient Clinics.

Depending upon your length of placement, you may also have the opportunity to spend time with the Hospital Palliative Care Team based at Whiston Hospital, Community Palliative Care Team based at the Hospice and Specialist Teams which can be discussed/arranged with our Student Link Nurse (Andrew Neary) during your placement.

Opportunities for learning.

- Admissions
- Discharges
- Multi-Disciplinary Team Working
- Medication Administration
- How to set up, use and monitor medication delivered via Syringe Driver
- Basic Nursing Care
- Wound care & ANTT
- Catheter insertion and maintenance
- Pressure Area Care & Assessment
- Advance Care Planning
- Complex Discharge Planning
- Communication Skills
- Symptom Control
- Mouthcare
- Common Symptoms at End of Life
- Risk management & Patient Safety
- Holistic Care
- Bereavement Support
- Verification of Death

Shift Patterns

Willowbrook Hospice Inpatient Unit provides a 24/7 service, and so you will be working with staff and other students to experience day, night and weekend shifts.

If you have any adjustments needed, or for further information prior to commencing your placement, please contact the hospice Practice Development Facilitators.

There is the option to work your placement hours across:

Long Days 07:00-20:30

Early Shifts: 7:00-15:00

Late Shifts: 12:30-20:30

Night Shifts: 20:00 – 07:30

You will get half an hour for your lunch on “short shifts” and two half an hour shifts when working Long Days.

Facilities:

There is a kitchen with fridge, freezer, microwave and kettle in our Staff

Room available to you, and during the day the Reflections Café is open providing hot meals and a range of salads/sandwiches/drinks etc for a small payment.

Emotional support:

We understand that the hospice can feel overwhelming or emotionally challenging. If you are in need of any support or have concerns about your placement, please speak to your named Assessor, Supervisor, the Student Link Nurse or Practice Development Facilitators. We are all here to support you. We also have a mental health first aid team available to you.

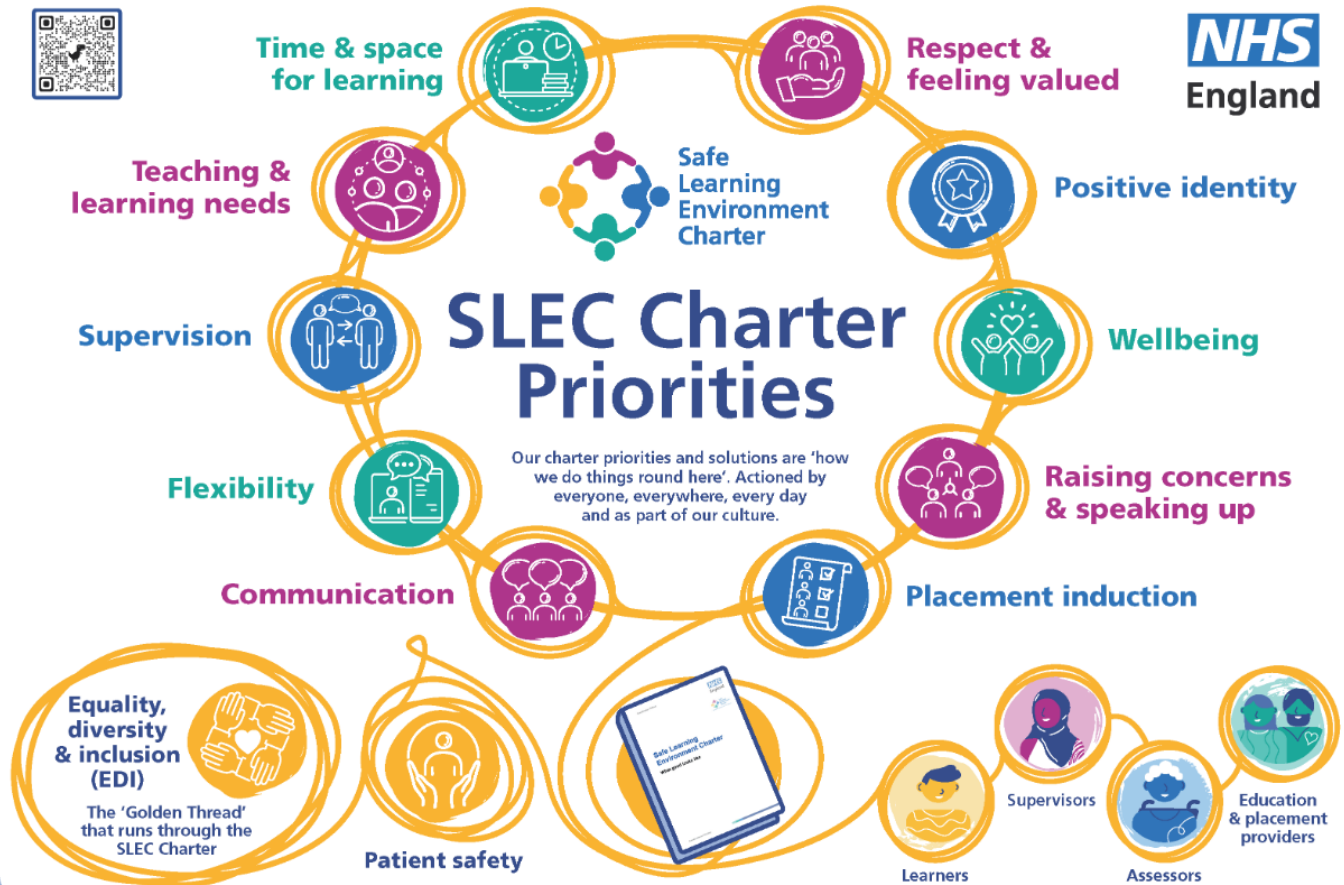
Spiritual Care:

Please feel free to use our multi-faith room should you require a safe space to pray/practice your faith. This can be found in the Quiet Space at the Main Entrance of the Hospice.

We all look forward to meeting you!

Best Wishes,

All the team at Willowbrook Hospice



Practice Development Facilitators: Lauren Lloyd & Catherine Owens
Practicedevelopment@willowbrookhospice.org.uk

Student Link Nurse: Senior Staff Nurse Andrew Neary
AndrewN@willowbrookhospice.org.uk

Senior Lecturer in Practice Learning: Beccy Hewins
UoCPIVOsLPL@chester.ac.uk